

EAST TOWER PENTHOUSE ONE RESIDENCE

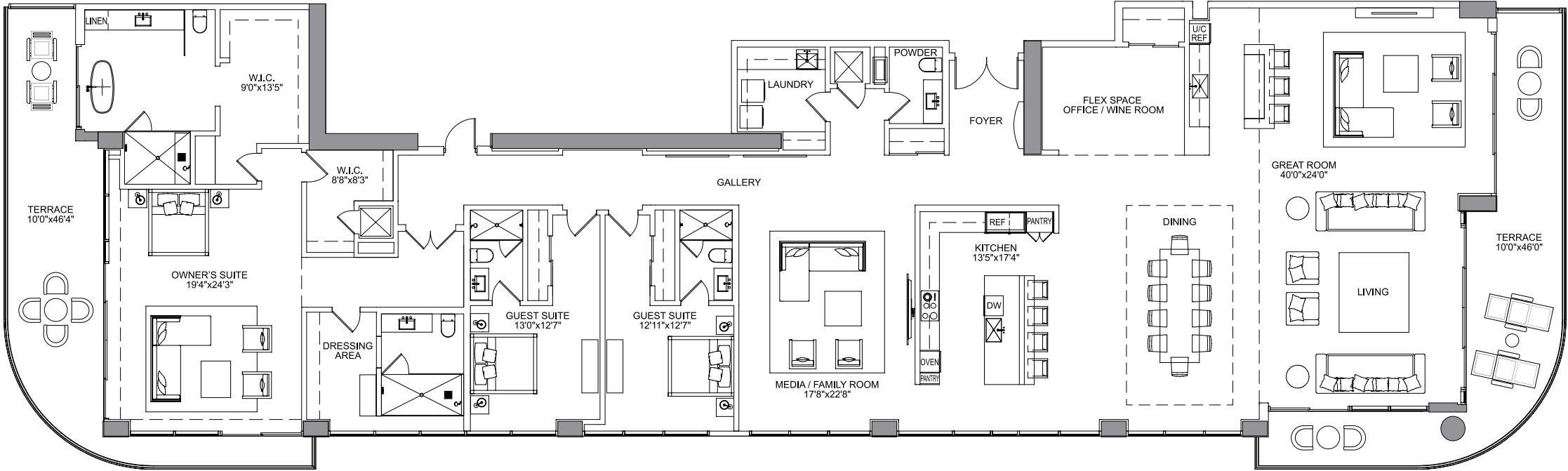
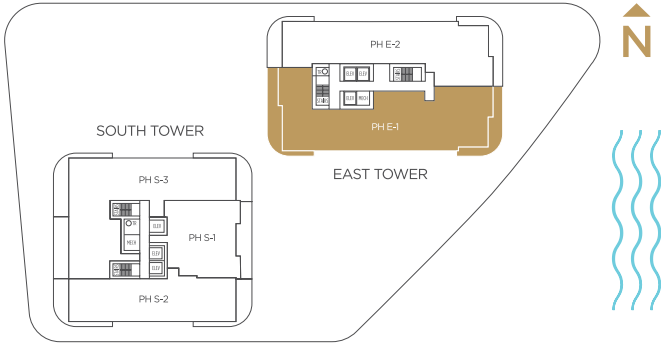
Specifications

3 Bedrooms | 3.5 Bathrooms | Family Room | Office

Interior 5,183 SQFT

Exterior 950 SQFT

Total Area 6,133 SQFT



PRESENTED BY
KOLTER DouglasElliman

ORAL REPRESENTATIONS CANNOT BE RELIED UPON AS CORRECTLY STATING REPRESENTATIONS OF THE SELLER. FOR CORRECT REPRESENTATIONS, MAKE REFERENCE TO THIS BROCHURE AND TO THE DOCUMENTS REQUIRED BY SECTION 718.503, FLORIDA STATUTES. TO BE FURNISHED BY A SELLER TO A BUYER OR LESSEE. Prices, terms and availability are subject to change at any time without notice. All dimensions are approximate. The floorplan is subject to change without notice. The seller reserves the absolute right, in its sole judgment and discretion, to substitute appliances, materials, fixtures and equipment of equal or greater value for those specified. There are various methods of calculating the total square footage of a condominium unit, and depending on the method of calculation, the quoted square footage of a condominium unit may vary more than a normal amount. The total condominium square footages as shown in this brochure are based on the "Architectural Method" of measurement which measures the exterior perimeter of the condominium unit, and also includes interior columns and fifty percent of demising walls. The method for calculating residential square footage used in marketing materials is different than the method used for calculating residential square footage in the condominium documents. Please see the Declaration of Condominium for more information. The model shown includes options and upgrades that are not a part of a base residence pricing. © The Kolter Group. November, 2021.

EAST TOWER

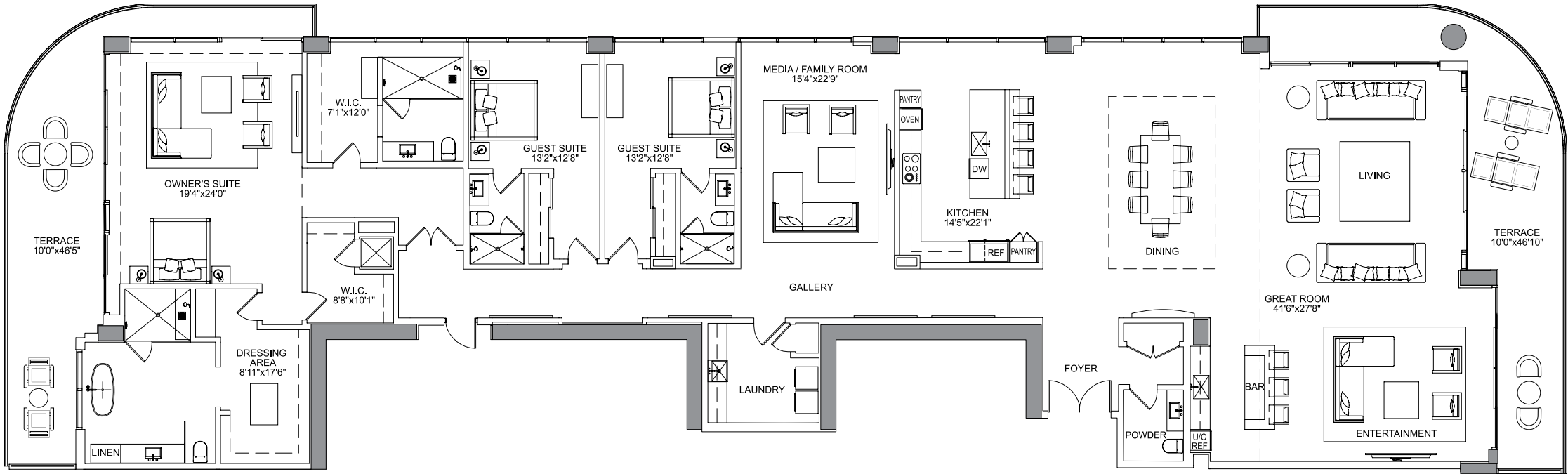
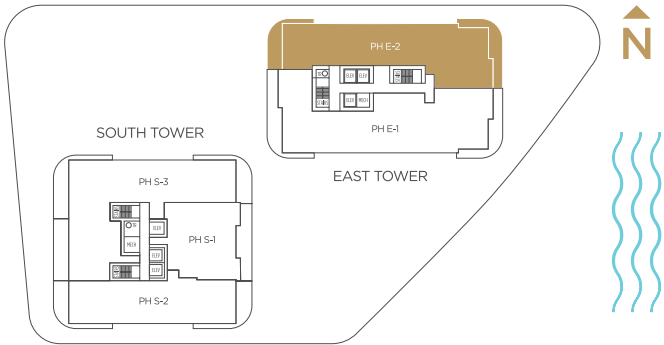
PENTHOUSE TWO

RESIDENCE

Specifications

3 Bedrooms | 3.5 Bathrooms | Family Room

Interior	4,962 SQFT
Exterior	927 SQFT
Total Area	5,889 SQFT



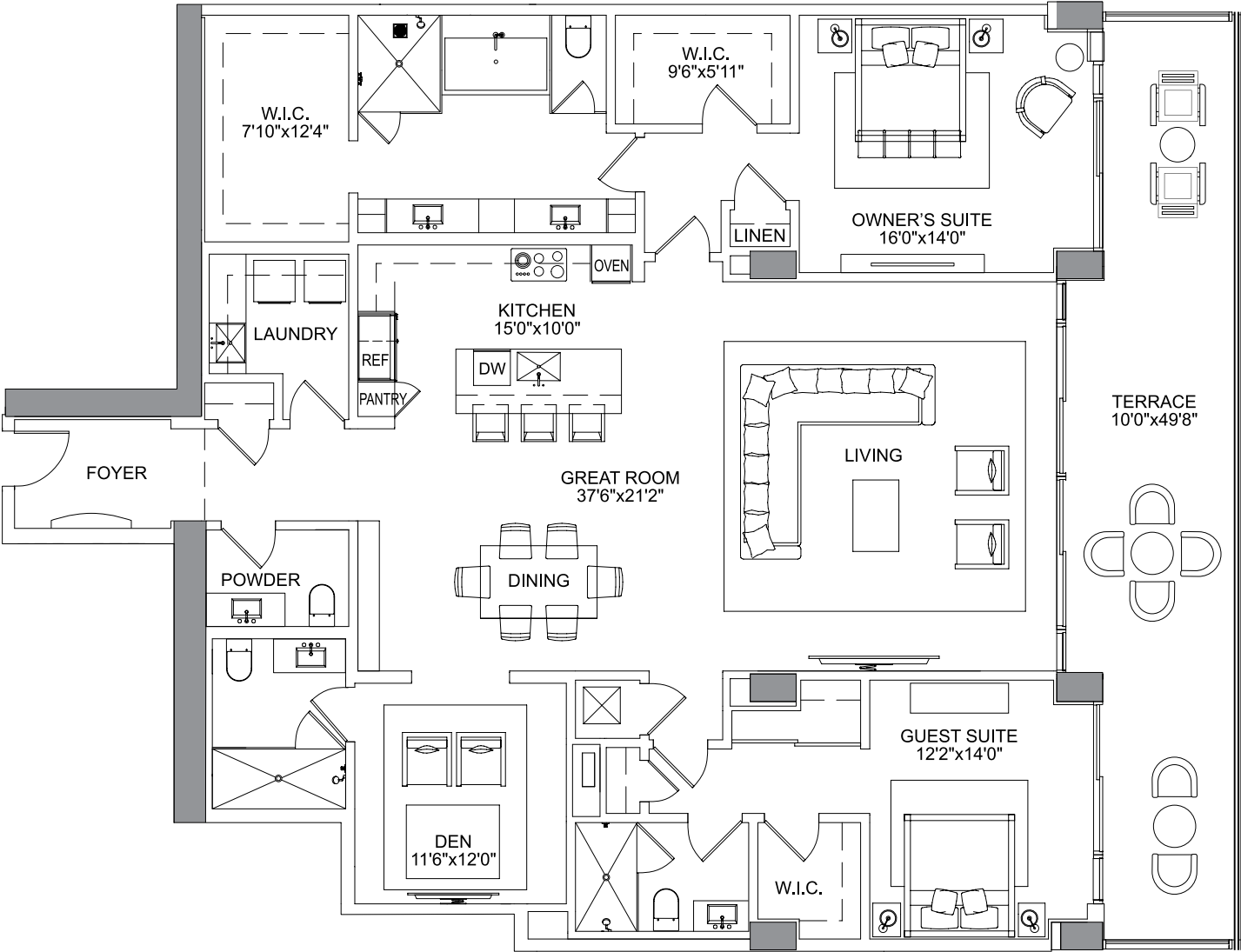
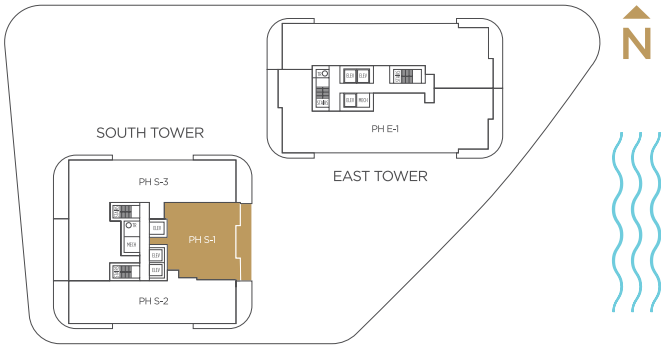
ORAL REPRESENTATIONS CANNOT BE RELIED UPON AS CORRECTLY STATING REPRESENTATIONS OF THE SELLER. FOR CORRECT REPRESENTATIONS, MAKE REFERENCE TO THIS BROCHURE AND TO THE DOCUMENTS REQUIRED BY SECTION 718.503, FLORIDA STATUTES. TO BE FURNISHED BY A SELLER TO A BUYER OR LESSEE. Prices, terms and availability are subject to change at any time without notice. All dimensions are approximate. The floorplan is subject to change without notice. The seller reserves the absolute right, in its sole judgment and discretion, to substitute appliances, materials, fixtures and equipment of equal or greater value for those specified. There are various methods of calculating the total square footage of a condominium unit, and depending on the method of calculation, the quoted square footage of a condominium unit may vary more than a normal amount. The total condominium square footages as shown in this brochure are based on the "Architectural Method" of measurement which measures the exterior perimeter of the condominium unit, and also includes interior columns and fifty percent of demising walls. The method for calculating residential square footage used in marketing materials is different than the method used for calculating residential square footage in the condominium documents. Please see the Declaration of Condominium for more information. The model shown includes options and upgrades that are not a part of a base residence pricing. © The Kolter Group. November, 2021.

SOUTH TOWER PENTHOUSE ONE RESIDENCE

Specifications

2 Bedrooms | 3.5 Bathrooms | Den

Interior	2,453 SQFT
Exterior	422 SQFT
Total Area	2,875 SQFT



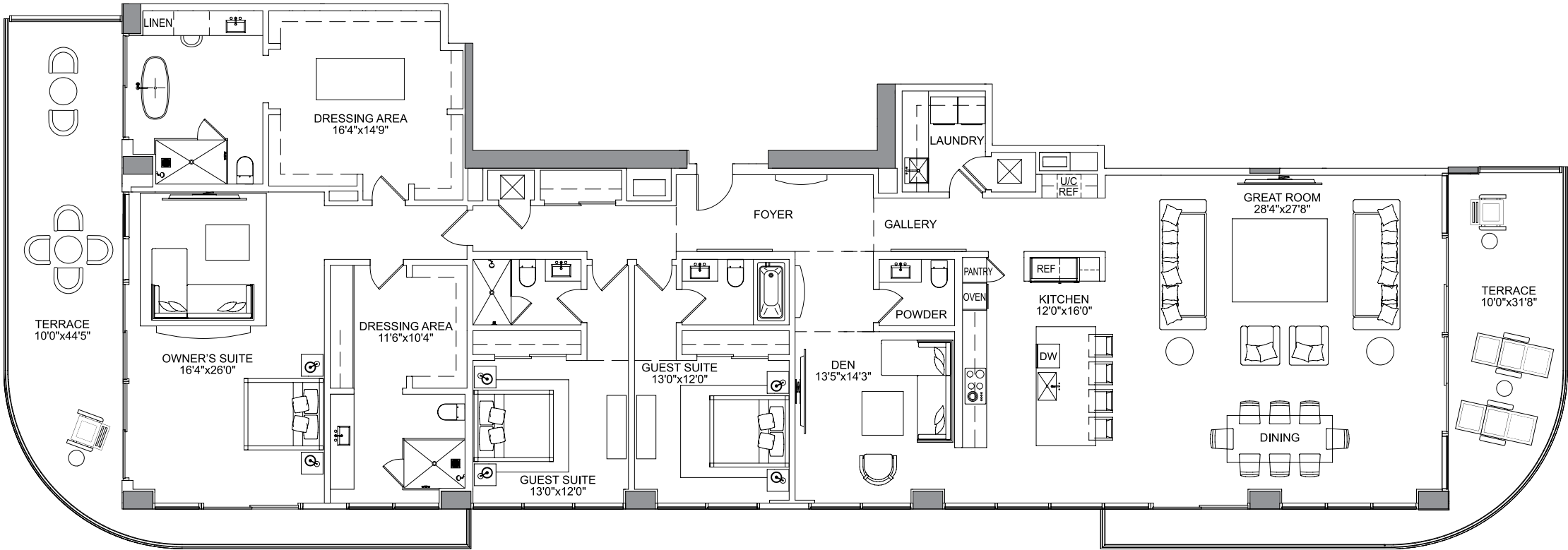
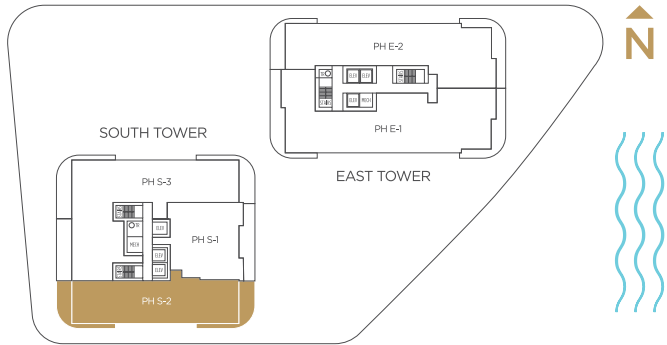
ORAL REPRESENTATIONS CANNOT BE RELIED UPON AS CORRECTLY STATING REPRESENTATIONS OF THE SELLER. FOR CORRECT REPRESENTATIONS, MAKE REFERENCE TO THIS BROCHURE AND TO THE DOCUMENTS REQUIRED BY SECTION 718.503, FLORIDA STATUTES. TO BE FURNISHED BY A SELLER TO A BUYER OR LESSEE. Prices, terms and availability are subject to change at any time without notice. All dimensions are approximate. The floorplan is subject to change without notice. The seller reserves the absolute right, in its sole judgment and discretion, to substitute appliances, materials, fixtures and equipment of equal or greater value for those specified. There are various methods of calculating the total square footage of a condominium unit, and depending on the method of calculation, the quoted square footage of a condominium unit may vary more than a normal amount. The total condominium square footages as shown in this brochure are based on the "Architectural Method" of measurement which measures the exterior perimeter of the condominium unit, and also includes interior columns and fifty percent of demising walls. The method for calculating residential square footage used in marketing materials is different than the method used for calculating residential square footage in the condominium documents. Please see the Declaration of Condominium for more information. The model shown includes options and upgrades that are not a part of a base residence pricing. © The Kolter Group. November, 2021.

SOUTH TOWER PENTHOUSE TWO RESIDENCE

Specifications

3 Bedrooms | 3.5 Bathrooms | Den

Interior	3,646 SQFT
Exterior	865 SQFT
Total Area	4,511 SQFT



PRESENTED BY
KOLTER DouglasElliman

ORAL REPRESENTATIONS CANNOT BE RELIED UPON AS CORRECTLY STATING REPRESENTATIONS OF THE SELLER. FOR CORRECT REPRESENTATIONS, MAKE REFERENCE TO THIS BROCHURE AND TO THE DOCUMENTS REQUIRED BY SECTION 718.503, FLORIDA STATUTES. TO BE FURNISHED BY A SELLER TO A BUYER OR LESSEE. Prices, terms and availability are subject to change at any time without notice. All dimensions are approximate. The floorplan is subject to change without notice. The seller reserves the absolute right, in its sole judgment and discretion, to substitute appliances, materials, fixtures and equipment of equal or greater value for those specified. There are various methods of calculating the total square footage of a condominium unit, and depending on the method of calculation, the quoted square footage of a condominium unit may vary more than a normal amount. The total condominium square footages as shown in this brochure are based on the "Architectural Method" of measurement which measures the exterior perimeter of the condominium unit, and also includes interior columns and fifty percent of demising walls. The method for calculating residential square footage used in marketing materials is different than the method used for calculating residential square footage in the condominium documents. Please see the Declaration of Condominium for more information. The model shown includes options and upgrades that are not a part of a base residence pricing. © The Kolter Group. November, 2021.

SOUTH TOWER

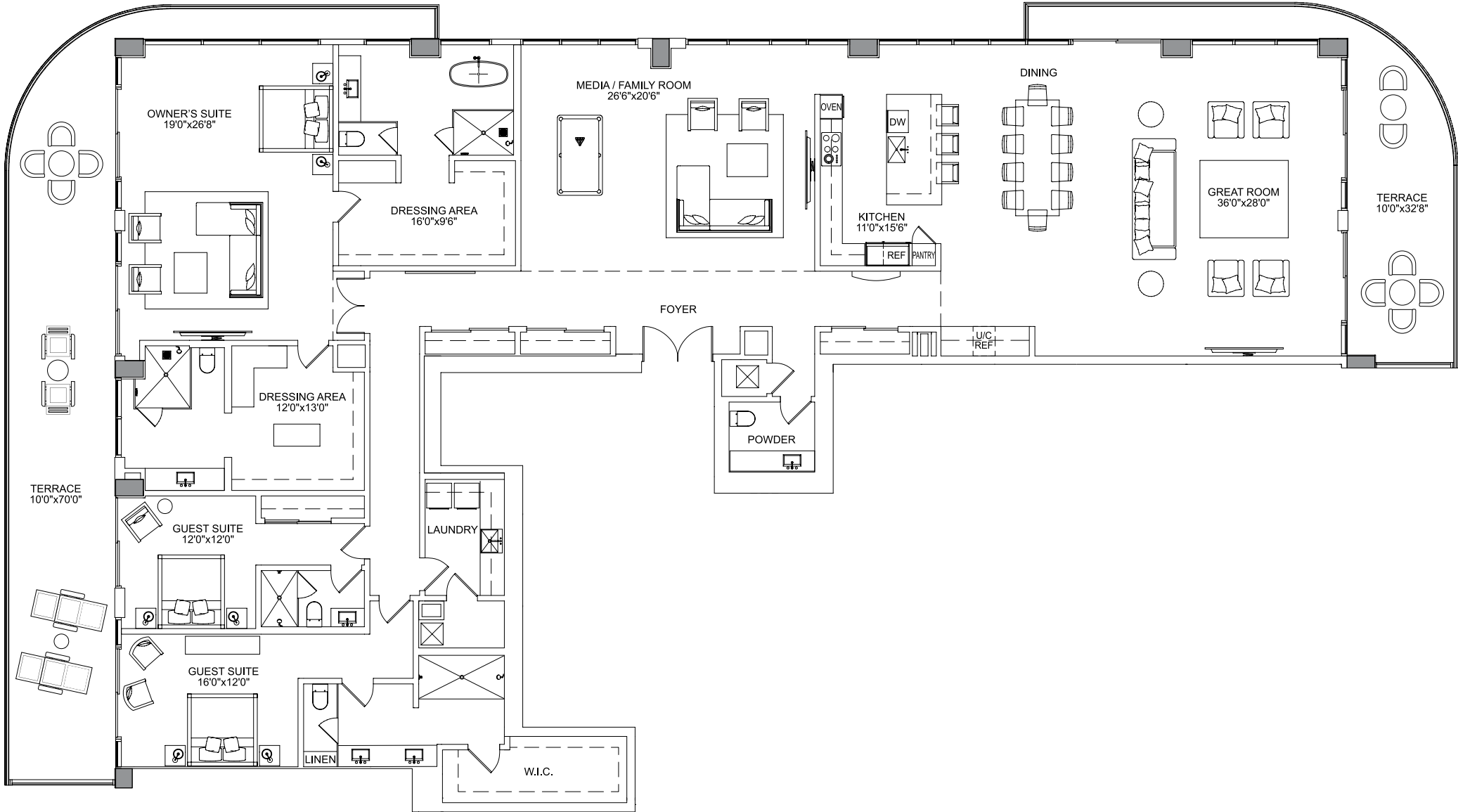
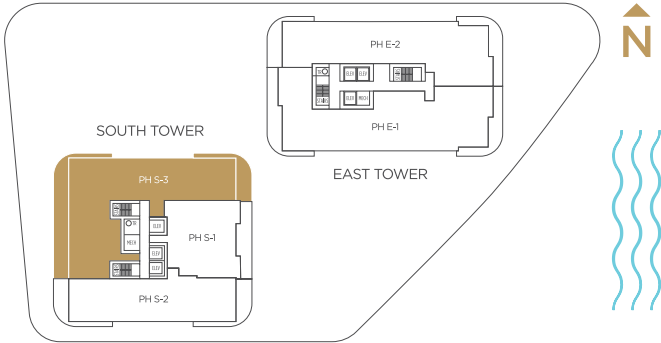
PENTHOUSE THREE

RESIDENCE

Specifications

3 Bedrooms | 3.5 Bathrooms | Family Room

Interior	4,664 SQFT
Exterior	1,126 SQFT
Total Area	5,790 SQFT



PRESENTED BY
KOLTER

ORAL REPRESENTATIONS CANNOT BE RELIED UPON AS CORRECTLY STATING REPRESENTATIONS OF THE SELLER. FOR CORRECT REPRESENTATIONS, MAKE REFERENCE TO THIS BROCHURE AND TO THE DOCUMENTS REQUIRED BY SECTION 718.503, FLORIDA STATUTES. TO BE FURNISHED BY A SELLER TO A BUYER OR LESSEE. Prices, terms and availability are subject to change at any time without notice. All dimensions are approximate. The floorplan is subject to change without notice. The seller reserves the absolute right, in its sole judgment and discretion, to substitute appliances, materials, fixtures and equipment of equal or greater value for those specified. There are various methods of calculating the total square footage of a condominium unit, and depending on the method of calculation, the quoted square footage of a condominium unit may vary more than a normal amount. The total condominium square footages as shown in this brochure are based on the "Architectural Method" of measurement which measures the exterior perimeter of the condominium unit, and also includes interior columns and fifty percent of demising walls. The method for calculating residential square footage used in marketing materials is different than the method used for calculating residential square footage in the condominium documents. Please see the Declaration of Condominium for more information. The model shown includes options and upgrades that are not a part of a base residence pricing. © The Kolter Group. November, 2021.