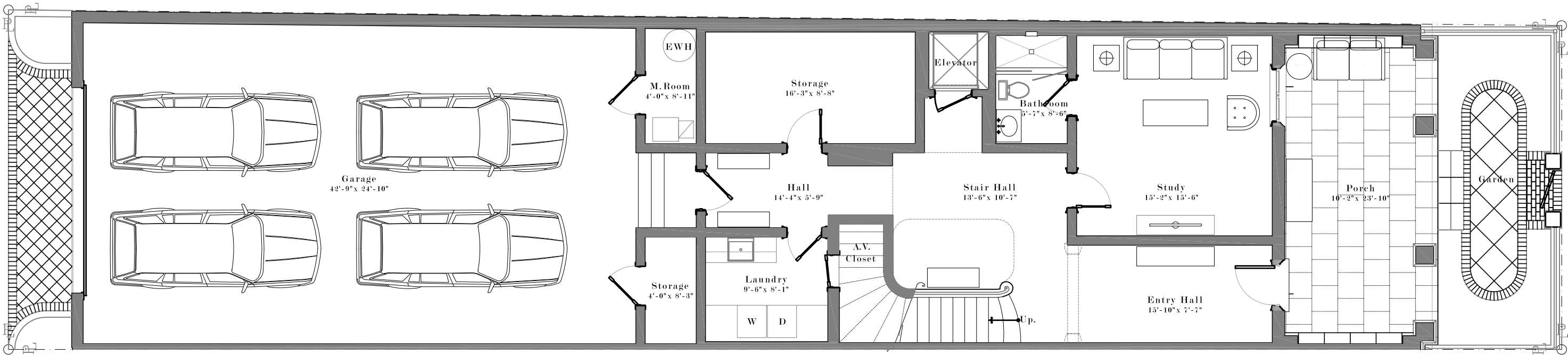
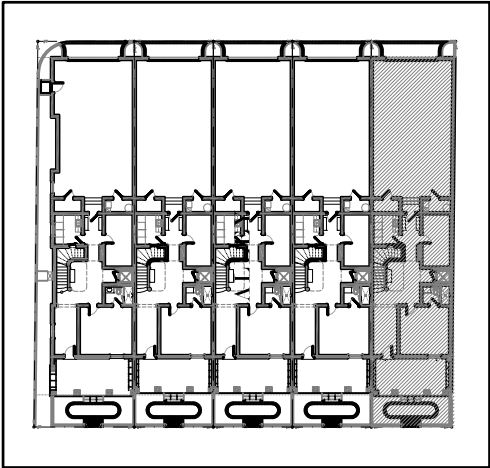


Althea Row



Unit 5-Type C
FIRST FLOOR PLAN
SCL: 5/8" = 1' - 0"

Unit 5

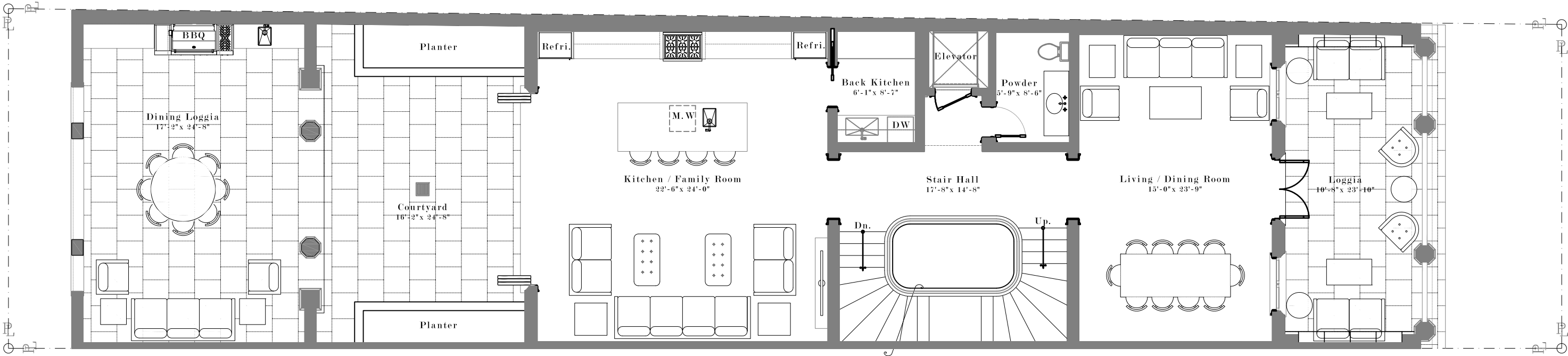


KEY PLAN

AC INTERIOR AREA	4,427
COV. TERRACE	1,065
GARAGE	1,248
OPEN TERRACE	418
TOTAL RESIDENCE	7,158

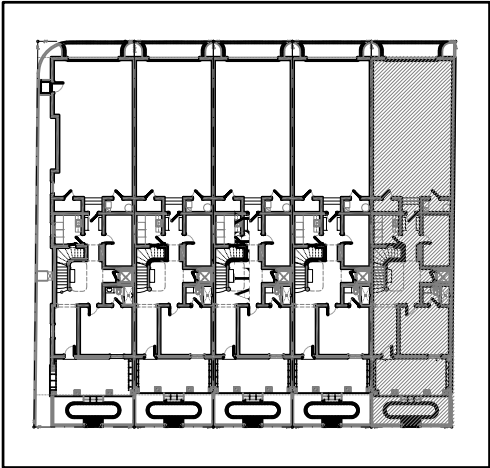
The drawings, specifications, dimensions and any other information in these floor plans are conceptual and for illustration purposes only and should not be relied upon. References should be made to the plans and specifications at Builder's office for accurate detailed information of the floor plans including calculation of square footage, dimensions, and other information.

Althea Row



Unit 5-Type C
SECOND FLOOR PLAN
SCL: 5/8" = 1'-0"

Unit 5

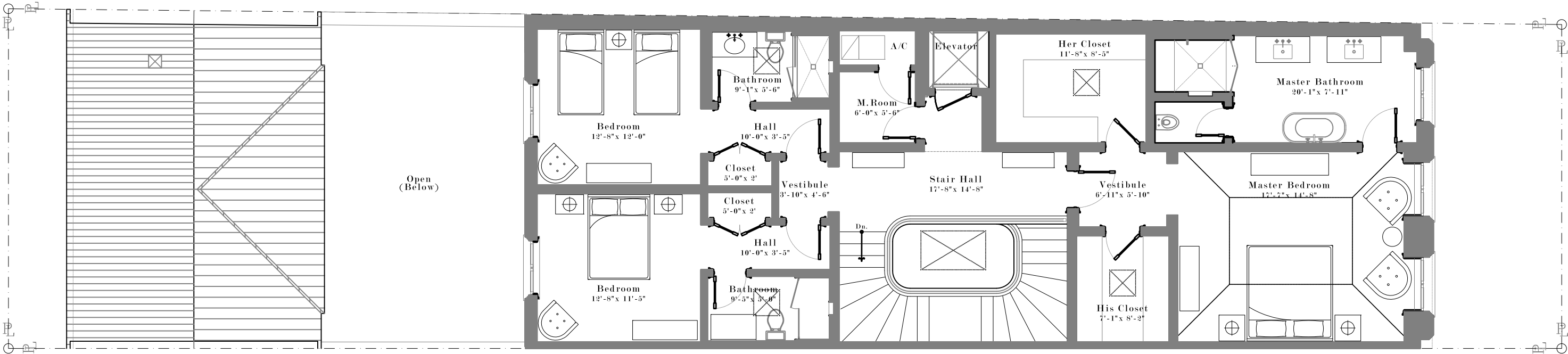


KEY PLAN

AC INTERIOR AREA	4,427
COV. TERRACE	1,065
GARAGE	1,248
OPEN TERRACE	418
TOTAL RESIDENCE	7,158

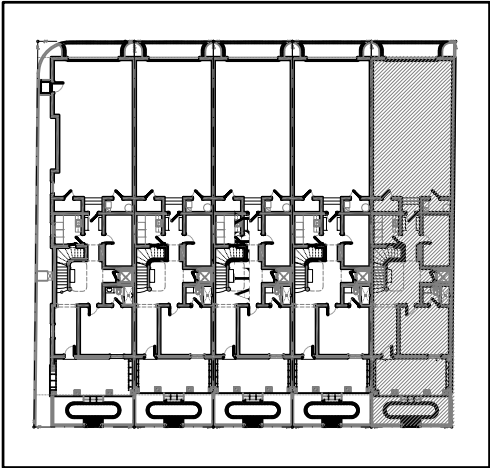
The drawings, specifications, dimensions and any other information in these floor plans are conceptual and for illustration purposes only and should not be relied upon. References should be made to the plans and specifications at Builder's office for accurate detailed information of the floor plans including calculation of square footage, dimensions, and other information.

Althea Row



Unit 5-Type C
THIRD FLOOR PLAN
SCL: 5/8" = 1'-0"

Unit 5



KEY PLAN

AC INTERIOR AREA	4,427
COV. TERRACE	1,065
GARAGE	1,248
OPEN TERRACE	418
TOTAL RESIDENCE	7,158

The drawings, specifications, dimensions and any other information in these floor plans are conceptual and for illustration purposes only and should not be relied upon. References should be made to the plans and specifications at Builder's office for accurate detailed information of the floor plans including calculation of square footage, dimensions, and other information.