



THE RITZ - CARLTON RESIDENCES

MIAMI BEACH

BOFFI KITCHEN



JULIEN - KITCHEN SINK



JULIEN - KITCHEN SINK



UNDERMOUNT STAINLESS STEEL KITCHEN SINK

SPECIFICATIONS

MODEL #003602
URBAN EDGE COLLECTION
BOWL DIM: 12" X 16" X 8"
OVERALL DIM: 13 1/2" X 17 1/2" X 8"

FEATURES

- . HANDCRAFTED IN CANADA
- . COMMERCIAL QUALITY STAINLESS STEEL - 16 GA THICKNESS
- . CORROSION RESISTANT MATERIAL
- . ENVIRONMENTALLY FRIENDLY PRODUCT 100% RECYCLABLE
- . #4 BRUSHED FINISH
- . PRACTICAL FLAT SINK BOTTOM AND STRAIGHT BOWL SIDES THAT MAXIMIZE AVAILABLE SPACE IN THE BOWL.
- . STYLISH AND FUNCTIONAL BOWL BOTTOM GROOVES THAT FACILITATE WATER DRAINAGE
- . LIFETIME WARRANTY
- . CERTIFICATIONS:
ASME A112.19.3
CSA B45.0
CSA B45.A



UNDERMOUNT STAINLESS STEEL KITCHEN SINK

SPECIFICATIONS

MODEL #003604
URBAN EDGE COLLECTION
BOWL DIM: 18" X 16" X 8"
OVERALL DIM: 19 1/2" X 17 1/2" X 8"

FEATURES

- . HANDCRAFTED IN CANADA
- . COMMERCIAL QUALITY STAINLESS STEEL - 16 GA THICKNESS
- . CORROSION RESISTANT MATERIAL
- . ENVIRONMENTALLY FRIENDLY PRODUCT 100% RECYCLABLE
- . #4 BRUSHED FINISH
- . PRACTICAL FLAT SINK BOTTOM AND STRAIGHT BOWL SIDES THAT MAXIMIZE AVAILABLE SPACE IN THE BOWL.
- . STYLISH AND FUNCTIONAL BOWL BOTTOM GROOVES THAT FACILITATE WATER DRAINAGE
- . LIFETIME WARRANTY
- . CERTIFICATIONS:
ASME A112.19.3
CSA B45.0
CSA B45.A

ELICA - HORIZONTE ISLAND HOOD



HIGH PERFORMANCE

PRODUCT NAME: HORIZONTE HOOD

PRODUCT SIZE (CM): 90 -120



ELICA DEEP SILENCE

PRODUCT DESCRIPTION: DUCT OUT / TOUCH CONTROL 3S+B / HALO 2X20 W LIGHTING / IEC AIRFLOW (M3/H) 240-448(603) / NOISE LEVEL DB(A) 43-54(61) / PRESSURE (PA) 454 / TOTAL



LONG LIFE FILTER

ABSORPTION (W) 255 / DUCT SIZE 150MM

GAGGENAU - 261 DISHWASHER



OPERATION

- . TOUCH KEY OPERATION
- . DISPLAY WITH TIME REMAINING INDICATOR
- . ELECTRONIC REFILL INDICATOR FOR SALT AND RISING AGENT
- . INFLOW WATER INDICATOR
- . END OF PROGRAM INDICATOR
- . TIME DELAY UP TO 24 HOURS
- . TECHNICAL FEATURES

INFO-LIGHT

- . GLASSCARE TECHNOLOGY
- . AQUA SENSOR
- . LOAD SENSOR
- . AQUA STOP
- . DOSAGE ASSIST
- . AUTOMATIC DETERGENT FUNCTION
- . REGENERATION ELECTRONICS
- . FLOW-THROUGH WATER HEATER
- . SOFT LOCK
- . TRIPLE FILTER SYSTEM, SELF-CLEANING
- . CHILD LOCK
- . PROGRAMS

FOUR PROGRAMS

- . HEAVY 150F - 160F
- . AUTO 130F - 150F
- . NORMAL 122F - 131F
- . QUICK WASH 113F
- . POWER BOOST
- . INTENSIVE WASH

FLEX UPPER BASKET

- . RACKMATIC WITH THREE LEVELS
- . TWO FOLDING TINES
- . TWO FOLDING RACKS
- . ONE KNIFE RACK

FLEX LOWER BASKET

- . FOUR FOLDING TINES
- . TWO FOLDING RACKS
- . CUTLERY BASKET
- . MAXIMUM DISH SIZES: 11 7/16" / 11", 10 7/16" / 12" OR 9 7/16" / 13"
- . THIRTEEN PLACE SETTING CAPACITY

TOTAL ANNUAL ENERGY CONSUMPTION: 279 KWH
WATER USAGE: 2.6 GALLONS
NOISE LEVEL: 44 DBA
TOTAL RATING: 2.3 KW
TOTAL AMPS: 12 A
120 V / 60 HZ
CONNECTING CABLE 47 1/4" WITH PLUG
WATER CONNECTION WITH 3/4" SCREW GLAND

MAIN SPECS

- . WIDTH 24" (61 CM)
- . POWER DISHWASHER, CLEANS AND DRIES IN ABOUT ONE HOUR
- . FOUR PROGRAMS WITH AQUA SENSOR AND TWO OPTIONS: GLASSCARE TECH
- . ENERGY STAR QUALIFIED

GAGGENAU - 400 SERIES OVEN



COOKING MODES

- . CONVECTION
- . ECONOMY CONVECTION
- . TOP + BOTTOM HEAT
- . TOP + 1/3 BOTTOM HEAT
- . TOP HEAT
- . 1/3 TOP + BOTTOM HEAT
- . CONVECTION + BOTTOM HEAT
- . CONVECTION + 1/3 BOTTOM HEAT
- . CONVECTION BROILING
- . BROILING
- . COMPACT GRILL
- . BAKING STONE OPERATION
- . ROASTER FUNCTION
- . DOUGH PROOFING
- . DEFROSTING
- . KEEPING WARM

OPERATION

- . AUTOMATIC DOOR OPENING
- . ROTARY KNOBS AND TFT TOUCH DISPLAY
- . CLEAR TEXT DISPLAY IN 25 LANGUAGES
- . OPTION TO SAVE INDIVIDUAL RECIPES
- . SIDE OPENING DOOR OPENS UP TO 180 DEGREE ANGLE

FEATURES

- . MEAT PROBE WITH AUTOMATIC SHUT-OFF
- . ROTISSERIE SPIT
- . BAKING STONE OUTLET
- . ACTUAL TEMPERATURE DISPLAY
- . SUPER QUICK PREHEATING

- . TIMER FUCTIONS: COOKING TIME, SWITCH-OFF TIME, SHORT-TERM TIMER, STOPWATCH, SABBATH MODE
- . ENAMEL WIRE RACKS ON THE SIDEWALLS WITH 5 RACK LEVELS, PYROLYTIC-SAFE
- . THERMALLY INSULATED DOOR WITH QUADRUPLE GLAZING
- . CHILD LOCK
- . SAFETY LOCK
- . COOLED HOUSING WITH TEMPERATURE PROTECTION

CLEANING

- . PYROLYTIC SELF CLEANING
- . GAGGENAU CLEAN-ENAMEL
- . HEATED AIR CLEANING CATALYST

TOTAL RATING 5.5 KW
TOTAL AMPS 25 A
208 / 220 - 240 V / 60 HZ
CONNECTING CABLE 47 1/4 WITHOUT PLUG

MAIN SPECS

- . HEADERLESS DOOR / AUTOMATIC DOOR OPENING
- . PYROLYTIC SELF CLEANING
- . UNIVERSAL HEATING SYSTEM WITH 17 HEATING MODES, WITH MEAT PROBE, ROTISSERIE SPLIT AND BAKING STONE OPERATION TFT TOUCH DISPLAY
- . ELECTRONIC PRECISION
- . TEMP CONTROL 85 F - 550 F

GAGGENAU - 400 SERIES MICROWAVE OVEN



COOKING MODES

- . CONVECTION + 100% HUMIDITY
- . CONVECTION + 80% HUMIDITY
- . CONVECTION + 60% HUMIDITY
- . CONVECTION + 30% HUMIDITY
- . CONVECTION + 0% HUMIDITY
- . FULL SURFACE GRILL + CONVECTION
- . FULL SURFACE GRILL
- . FULL SURFACE GRILL LEVEL 1 + HUMIDITY
- . FULL SURFACE GRILL LEVEL 2 + HUMIDITY
- . PROOFING
- . DEFROSTING
- . REFRESHING
- . MISTING
- . LOW TEMPERATURE COOKING

OPERATION

- . AUTOMATIC DOOR OPENING
- . ROTARY KNOBS AND TFT TOUCH DISPLAY
- . CLEAR TEXT DISPLAY IN 25 LANGUAGES
- . OPTION TO SAVE INDIVIDUAL RECIPES
- . SIDE OPENING DOOR OPENS UP TO 180 DEGREE ANGLE

FEATURES

- . 2000 W FULL SURFACE GRILL BEHIND GLASS CERAMIC
- . STEAM EVACUATION
- . MEAT PROBE WITH AUTOMATIC SHUT-OFF FUNCTION
- . ACTUAL TEMP DISPLAY
- . TIMER FUCTIONS: COOKING TIME, SHUT

- OFF TIME, SHORT-TERM TIMER, STOP WATCH, SABBATH MODE
- . AUTOMATIC BOILING POINT DETECTION
- . CAPACITY DISPLAY OF FILTER CARTRIDGE
- . 60 W HALOGEN LIGHT ON THE SIDE
- . HYGIENIC STAINLESS STEEL COOKING INTERIOR
- . FOUR RACK LEVELS

SAFETY

- . STEAM EVACUATION
- . CHILD LOCK
- . SAFETY LOCK
- . COOLED HOUSING WITH TEMP PROTECTION

CLEANING

- . CLEANING PROGRAM
- . DRYING PROGRAM
- . DESCALING PROGRAM
- . GREASE FILTER IN FRONT OF CONVECTION FAN, DISHWASHER SAFE

GAGGENAU - 24" COFFEE MAKER



OPERATION

- . 8 LANGUAGE FUNCTION DISPLAY
- . PROGRAMMABLE TURN-ON TIME AND ECO-FUNCTION
- . 6 LEVELS OF GROUND COFFEE PORTIONING FROM VERY MILD TO EXTRA STRONG
- . 6 INDIVIDUAL GRINDING LEVEL SETTINGS
- . SERVES 1 OR 2 CUPS WITH SELECTION OF 12 WATER LEVELS
- . HEIGHT ADJUSTABLE COFFEE DISPENSER
- . 4 WATER HARDNESS SETTINGS
- . 3 COFFEE TEMPERATURE LEVELS

FEATURES

- . 215 PSI THERMO-BLOCK PRESSURE PUMP SYSTEM
- . CONICAL GRINDING GEAR OF SOLID STEEL
- . ADJUSTABLE BREWING CHAMBER FROM 0.25 - 0.5 OZ (7 - 14 G)
- . 1.9 QUART (1.8 L)
- . REMOVABLE WATER TANK
- . STEAM AND HOT WATER FUNCTION
- . OPERATION INDICATION
- . BEAN CONTAINER WITH AROMA PRESERVATION LID FOR UP TO 14 OZ (400 G)
- . SEPARATE CONTAINER FOR SECOND GROUND COFFEE TYPE
- . ELECTRONIC FILL LEVEL CONTROL FOR WATER AND COFFEE BEANS
- . ELECTRONIC FILL LEVEL CONTROL FOR DRIP TRAY AND CONTAINER FOR COFFEE DREGS

- . FULLY AUTOMATIC RINSE PROGRAM WHEN MACHINE IS TURNED ON / OFF
- . AUTOMATIC CLEANING AND DESCALING PROGRAM

TOTAL CONNECTED LOAD 1.3 KW
TOTAL AMPS 11 A
120 V / 60 HZ
CONNECTING CABLE 118" LONG WITH PLUG

MAIN FACTS

AROMA-WHIRL BREWING TECHNOLOGY:
FULL AROMA
SINGLE PORTION CLEANING: 100% HYGIENIC
IMMEDIATE COFFEE BREWING AFTER USING FOAM FUNCTION

* ALL UNITS TO HAVE 24" COFFEE MAKER EXCLUDING THE FOLLOWING:
UNIT TYPE 14 (QTY. 2): #216 AND #316 - NO COFFEE MAKERS INCLUDED

GAGGENAU - 491 COOKTOP



COOKING ZONES

- . 1 THREE RING WOK BURNER (300 W - 5500 W)
- . 2 TWO RING HIGH OUTPUT BURNERS (160 W - 4000 W)
- . 2 TWO RING STANDARD BURNERS (160 W - 2000 W)

OPERATION

- . CONTROL KNOB WITH RING AND OUTPUT MARKING
- . ONE-HANDED OPERATION
- . GAS VALVE WITH FINE CONTROL

FEATURES

- . THREE-PART CAST-IRON PAN SUPPORT WITH FLAT, CONTINUOUS POT SURFACE
- . BRASS BURNING RINGS
- . SAFETY LOCK

TOTAL CONNECTED LOAD GAS 59,800 BTU 17.5 KW
TOTAL AMPS 2 A
120 V / 60 HZ
CONNECTING CABLE 55" LONG WITH PLUG

MAIN SPECS

- . FIVE MULTI-RING BURNERS WITH UP TO 60,000 BTU
- . ELECTRONIC FLAME MONITORING

- WITH AUTOMATIC RE-IGNITION
- . STURDY STAINLESS STEEL, SOLID SMOOTH SURFACE CAST-IRON PAN SUPPORTS AND LARGE PROFESSIONAL FRONT CONTROL KNOBS
- . PRECISION CRAFTING OF 1/8" STAINLESS STEEL
- . FOR SURFACE MOUNT INSTALLATION WITH A VISIBLE EDGE OR FOR FLUSH INSTALLATION
- . CAN BE COMBINED WITH OTHER VARIO 400 SERIES PRODUCTS

GAGGENAU - REFRIGERATOR 30"



OPERATION	WITH SETTINGS FOR FISH (32 F), MEAT (35 F) AND PRODUCE (37 F)
ELECTRONIC PRECISION TEMP CONTROL WITH DIGITAL TEMP DISPLAY.	. 1 CONTINUOUS, FULLY EXTENDABLE TEMPERATURE CONTROLLED DRAWER WITH TRANSPARENT FRONT AND INTEGRATED LIGHTING
TECH FEATURES	ENERGY CONSUMPTION 0.849 KWH/24H ENERGY CONSUMPTION 309.89 KWH/YEAR NOISE LEVEL 39 DB
. DYNAMIC COOL AIR DISTRIBUTION WITH MULTI-FLOW AIR SYSTEM	TOTAL RATING 0.180 KW
. AUTOMATIC DEFROSTING WITH DEFROST WATER EVAPORATION	TOTAL AMPS 15 A
. ACTIVATED CHARCOAL AIR FILTER	120 V / 60 HZ
. ENERGY- SAVING VACATION MODE	CONNECTING CABLE 78 3/4" LONG WITH PLUG
. OPEN-DOOR AND MALFUNCTION WARNING SYSTEM	MAIN SPECS
COOLING COMPARTMENT	. WIDTH 30" (76.2 CM)
. NET VOLUME 17.2 CU FT (418 L)	. STAINLESS STEEL INTERIOR
. NO-FROST TECH WITH FAST COOLING	. GENEROUS LED LIGHTING CONCEPT
. TEMP ADJUSTABLE FROM 35 F TO 46 F (+2 C TO +8 C)	. SOLID ALUMINUM DOOR BINS
. 4 SAFETY GLASS SHELVES (ONE IS MOTORIZED, TWO ARE MANUALLY ADJUSTABLE)	. NET VOLUME 17.2 CU FT
. 2 FULLY EXTENDABLE DRAWERS (LOW AND HIGH) WITH TRANSPARENT FRONT	. TEMPERATURE CONTROLLED DRAWER (32 F TO 37 F)
. BRIGHT INTERIOR LIGHTING WITH LED SIDEWALL PILLARS	ONE MOTORIZED GLASS SHELF, ADJUSTABLE WHEN FULLY LOADED
. 3 HEIGHT ADJUSTABLE DOOR BINS, ONE OF WHICH IS A LARGE GALLON DOOR BIN	ENERGY STAR QUALIFIED
. 1 DOOR BIN WITH TRANSPARENT FRONT FLAP	
. TEMPERATURE CONTROLLED DRAWER	
. NET VOLUME 0.9 CU FT	
. SEPARATE AUTOMATIC TEMP CONTROL	

* ALL UNITS TO HAVE 30" REFRIGERATORS UNLESS SPECIFIED OTHERWISE
PLEASE SEE PAGES 14 TO 17 FOR SPECIFIED UNITS WITH THEIR SPECS

GAGGENAU - FREEZER 30"



OPERATION	. ICE CUBE PRODUCTION APPROX. 3.9 LB (1.8KG)/24 H
ELECTRONIC PRECISION TEMP CONTROL WITH DIGITAL TEMP DISPLAY.	. REMOVABLE ICE STORAGE BIN WITH APPROX. 8.8 LB (4KG) CAPACITY
TECH FEATURES	ENERGY CONSUMPTION 1.545 KWH/24H NOISE LEVEL 39 DB
. DYNAMIC COOL AIR DISTRIBUTION WITH MULTI-FLOW AIR SYSTEM	TOTAL RATING 0.565 KW
. AUTOMATIC DEFROSTING WITH DEFROST WATER EVAPORATION	TOTAL AMPS 15 A
. ACTIVATED CHARCOAL AIR FILTER	120 V / 60 HZ
. ENERGY- SAVING VACATION MODE	CONNECTING CABLE 78 3/4" LONG WITH PLUG
. OPEN-DOOR AND MALFUNCTION WARNING SYSTEM	SUPPLY HOSE 118 3/4" WITH CONNECTION
FREEZER COMPARTMENT	MAIN SPECS
. NO-FROST TECH WITH FAST FREEZING	. WIDTH 30" (76.2 CM)
. TEMP ADJUSTABLE FROM 7 F TO -9 F (-14 C TO -25 C)	. STAINLESS STEEL INTERIOR
. 4 SOLID METAL SHELVES, THREE OF WHICH ARE MANUALLY ADJUSTABLE	. INTEGRATED AUTOMATIC ICE MAKER WITH FIXED WATER CONNECTION
. 2 FULLY EXTENDABLE DRAWERS WITH TRANSPARENT FRONT, ONE OF WHICH IS LARGE, ONE IS REGULAR	. SOLID ALUMINUM DOOR BINS
. BRIGHT INTERIOR LIGHTING WITH LED SIDEWALL PILLARS	. NET VOLUME 15.8 CU FT
. 4 HEIGHT-ADJUSTABLE DOOR BINS, ONE OF WHICH IS A GALLON DOOR BIN	. ENERGY START QUALIFIED
. 1 DOOR BIN WITH TRANSPARENT FRONT FLAP	
. INTEGRATED ICE DISPENSER WITH FIXED WATER CONNECTION. ICE MAKER CAN BE SWITCHED OFF INDEPENDENTLY	

* ALL UNITS TO HAVE 30" FREEZERS UNLESS SPECIFIED OTHERWISE
PLEASE SEE PAGES 15 TO 17 FOR SPECIFIED UNITS WITH THEIR SPECS

GAGGENAU - FREEZER 18"



OPERATION	. ICE CUBE PRODUCTION APPROX. 3.9 LB (1.8KG)/24 H
ELECTRONIC PRECISION TEMP CONTROL WITH DIGITAL TEMP DISPLAY.	. REMOVABLE ICE STORAGE BIN WITH APPROX. 8.8 LB (4KG) CAPACITY
TECH FEATURES	ENERGY CONSUMPTION 1.545 KWH/24H NOISE LEVEL 39 DB
. DYNAMIC COOL AIR DISTRIBUTION WITH MULTI-FLOW AIR SYSTEM	TOTAL RATING 0.565 KW
. AUTOMATIC DEFROSTING WITH DEFROST WATER EVAPORATION	TOTAL AMPS 15 A
. ACTIVATED CHARCOAL AIR FILTER	120 V / 60 HZ
. ENERGY- SAVING VACATION MODE	CONNECTING CABLE 78 3/4" LONG WITH PLUG
. OPEN-DOOR AND MALFUNCTION WARNING SYSTEM	SUPPLY HOSE 118 3/4" WITH CONNECTION
FREEZER COMPARTMENT	MAIN SPECS
. NO-FROST TECH WITH FAST FREEZING	. WIDTH 18" (45.7 CM)
. TEMP ADJUSTABLE FROM 7 F TO -9 F (-14 C TO -25 C)	. STAINLESS STEEL INTERIOR
. 4 SOLID METAL SHELVES, THREE OF WHICH ARE MANUALLY ADJUSTABLE	. INTEGRATED AUTOMATIC ICE MAKER WITH FIXED WATER CONNECTION
. 2 FULLY EXTENDABLE DRAWERS WITH TRANSPARENT FRONT, ONE OF WHICH IS LARGE, ONE IS REGULAR	. SOLID ALUMINUM DOOR BINS
. BRIGHT INTERIOR LIGHTING WITH LED SIDEWALL PILLARS	. NET VOLUME 15.8 CU FT
. 4 HEIGHT-ADJUSTABLE DOOR BINS, ONE OF WHICH IS A GALLON DOOR BIN	. ENERGY STAR QUALIFIED
. 1 DOOR BIN WITH TRANSPARENT FRONT FLAP	
. INTEGRATED ICE DISPENSER WITH FIXED WATER CONNECTION. ICE MAKER CAN BE SWITCHED OFF INDEPENDENTLY	

* THE FOLLOWING UNITS WILL HAVE 18" FREEZERS
UNIT TYPE 27 (QTY. 3): #503, #603 AND LPH03
UNIT TYPE 32 (QTY. 3): #520, #620 AND #720
UNIT TYP2 32A (QTY. 1): #LPH20

GAGGENAU - 30" FREEZER AND REFRIGERATOR COMBINATION



- OPERATION

ELECTRONIC PRECISION TEMP CONTROL WITH DIGITAL TEMP DISPLAY.

TECH FEATURES

 - . DYNAMIC COOL AIR DISTRIBUTION WITH MULTI-FLOW AIR SYSTEM
 - . AUTOMATIC DEFROSTING WITH DEFROST WATER EVAPORATION
 - . ACTIVATED CHARCOAL AIR FILTER
 - . ENERGY- SAVING VACATION MODE
 - . OPEN-DOOR AND MALFUNCTION WARNING SYSTEM

COOLING COMPARTMENT

 - . NET VOLUME 14.3 CU FT
 - . NO-FROST TECHNOLOGY WITH FAST COOLING
 - . TEMP ADJUSTABLE FROM 35 F TO 46 F (+2 C TO +8 C)
 - . 2 SAFETY GLASS SHELVES, 1 OF WHICH IS MOTORIZED
 - . 1 ASYMMETRICALLY SPLIT SAFETY GLASS SHELF, MANUALLY ADJUSTABLE
 - . 2 FULLY EXTENDABLE DRAWERS WITH TRANSPARENT FRONT
 - . BRIGHT INTERIOR LIGHTING WITH LED SIDEWALL PILLARS
 - . 2 HEIGHT ADJUSTABLE DOOR BINS, ONE LARGE GALLON DOOR BIN
 - . 1 DOOR BIN WITH TRANSPARENT FRONT FLAP
- . TEMP CONTROL DRAWER

 - . NET VOLUME 0.9 CU FT
 - . NO-FROST TECH
 - . 1 CONTINUOUS, FULLY EXTENDABLE YEMPERATURE CONTROLLED DRAWER CLOSE TO 32F WITH TRANSPARENT FRONT, MANUALLY CONTROLLABLE

FREEZER COMPARTMENT

 - . NET VOLUME 5.8 CU FT (166 L)
 - . NO-FROST TECH WITH FAST FREEZING
 - . TEMP ADJUSTABLE FROM 7 F TO -9 F (-14 C TO -25 C)
 - . 2 FULLY EXTENDABLE DRAWERS
 - . INTERIOR LIGHTING WITH TWO SPOT LIGHTS
 - . ICE DISPENSER
 - . INTEGRATED AUTOMATIC ICE MAKER IN THE FREEZER COMPARTMENT WITH FIXED WATER CONNECTION
 - . ICE MAKER CAN BE SWITCHED OFF INDEPENDENTLY
 - . ICE CUBE PRODUCTION APPROX 3.1 LB (1.4 KG)/24H
 - . REMOVABLE ICE STORAGE BIN WITH APPROX 6.6 LB (3 KG) CAPACITY

ENERGY CONSUMPTION 1.619 KWH/24H
NOISE LEVEL 41DB
TOTAL RATING 0.588 KW
TOTAL AMPS 15 A
120 V / 60 HZ

* THE FOLLOWING UNITS WILL HAVE 30" REFRIGERATOR AND FREEZER COMBO
UNIT TYPE 4 (QTY. 1): #103
UNIT TYPE 17 (QTY. 1): #322
UNIT TYP2 31 (QTY. 4): #517, #617, 717 AND LPH17

GAGGENAU - FREEZER 24"



OPERATION	. ICE CUBE PRODUCTION APPROX. 3.9 LB (1.8KG)/24 H
ELECTRONIC PRECISION TEMP CONTROL WITH DIGITAL TEMP DISPLAY.	. REMOVABLE ICE STORAGE BIN WITH APPROX. 8.8 LB (4KG) CAPACITY
TECH FEATURES	ENERGY CONSUMPTION 1.545 KWH/24H NOISE LEVEL 39 DB
. DYNAMIC COOL AIR DISTRIBUTION WITH MULTI-FLOW AIR SYSTEM	TOTAL RATING 0.565 KW
. AUTOMATIC DEFROSTING WITH DEFROST WATER EVAPORATION	TOTAL AMPS 15 A
. ACTIVATED CHARCOAL AIR FILTER	120 V / 60 HZ
. ENERGY- SAVING VACATION MODE	CONNECTING CABLE 78 3/4" LONG WITH PLUG
. OPEN-DOOR AND MALFUNCTION WARNING SYSTEM	SUPPLY HOSE 118 3/4" WITH CONNECTION
FREEZER COMPARTMENT	MAIN SPECS
. NO-FROST TECH WITH FAST FREEZING	. WIDTH 24" (61 CM)
. TEMP ADJUSTABLE FROM 7 F TO -9 F (-14 C TO -25 C)	. STAINLESS STEEL INTERIOR
. 4 SOLID METAL SHELVES, THREE OF WHICH ARE MANUALLY ADJUSTABLE	. INTEGRATED AUTOMATIC ICE MAKER WITH FIXED WATER CONNECTION
. 2 FULLY EXTENDABLE DRAWERS WITH TRANSPARENT FRONT, ONE OF WHICH IS LARGE, ONE IS REGULAR	. SOLID ALUMINUM DOOR BINS
. BRIGHT INTERIOR LIGHTING WITH LED SIDEWALL PILLARS	. NET VOLUME 15.8 CU FT
. 4 HEIGHT-ADJUSTABLE DOOR BINS, ONE OF WHICH IS A GALLON DOOR BIN	. ENERGY STAR QUALIFIED
. 1 DOOR BIN WITH TRANSPARENT FRONT FLAP	
. INTEGRATED ICE DISPENSER WITH FIXED WATER CONNECTION. ICE MAKER CAN BE SWITCHED OFF INDEPENDENTLY	

* THE FOLLOWING UNITS WILL HAVE 24" FREEZERS
UNIT TYPE 3 (QTY. 3): #102, #202 AND #302
UNIT TYPE 3A (QTY. 3): #214, #314 AND #414

SALVATORI GREY MARBLE - KITCHEN COUNTER



BOFFI WHITE LACQUER GLOSS FINISH



BOFFI MASTER BATHROOM



BOFFI CANALETTO WALNUT - MASTER BATHROOM CABINETS



SALVATORI BAMBOO SILK GEORGETTE LIMESTONE FINISH



* MASTER BATHROOM WALL COVERING ONLY

MOMA DESIGN - OCEAN BATHTUB



PRODUCT LOCATION: MASTER BATHROOM

PRODUCT NAME: OCEAN BATHTUB

PRODUCT SIZE: 6'-0" X 4'-0"

PRODUCT FINISHES/COLOURS: WHITE STONAGE

BOFFI - MASTER BATHROOM WASHBASIN AND DRAWER



DURAVIT - DARLING COLLECTION TOILET AND BIDET



WONDERGLISS SURFACE FINISH:
. LESS POLLUTING DEPOSITS, LESS CLEANING WORK.

ADDITIONAL INFORMATION:
. WASHDOWN MODEL WITHOUT CISTERN
. OUTLET FOR VARIO CONNECTOR SET FOR HORIZONTAL AND VERTICAL
OUTLET
. VARIO CONNECTING BEND

COLOR:
. WHITE

MODEL #01280900921

LOCATION: MASTER BATHROOM, SECONDARY BATHROOMS AND POWDER
ROOM



WONDERGLISS SURFACE FINISH:
. LESS POLLUTING DEPOSITS, LESS CLEANING WORK.

ADDITIONAL INFORMATION:
. WITH OVERFLOW
. WITH TAP PLATFORM
. FIXINGS INCLUDED

COLOR:
. WHITE

MODEL #22301000001

LOCATION: MASTER BATHROOM, SECONDARY BATHROOMS AND POWDER
ROOM

BOFFI - SECONDARY BATHROOM CABINETS



* FINISH: LACQUERED MATTE WHITE

BOFFI - PICCOLO WASHBASIN AND CABINET HANDLE DETAIL



KOS - SOFT BATHTUB



PRODUCT NAME: SOFT BATHTUB

PRODUCT LOCATION: GUEST BATHROOM

PRODUCT SIZE: 70 7/8" X 31 1/2"

PRODUCT FINISHES/COLOURS: WHITE CRYSTAL PLANT

PRODUCT DESCRIPTION:

- . SIMPLE AND FUCTIONAL
- . SOFT IS IDEAL FOR ANY TYPE AND SIZE OF ROOM
- . AVAILABLE IN BUILT-IN VERSION
- . IT OFFERS AN OPPORTINITY TO PERSONALIZE AND CHARACTERIZE THE BATHROOM TO SUIT THE TASTE AND PREFERENCES OF THE INDIVIDUAL USER

MOMA DESIGN - PODER ROOM DIAMOND TOWER WASHBASIN



ZUCCHETI - AGUABLU COLLECTION



AGUABLU SHOWER FAUCET



AGUABLU SOAP DISPENSER



AGUABLU FAUCET



AGUABLU FAUCET

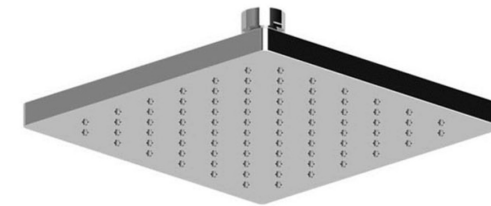
ZUCCHETTI - AGUABLU COLLECTION



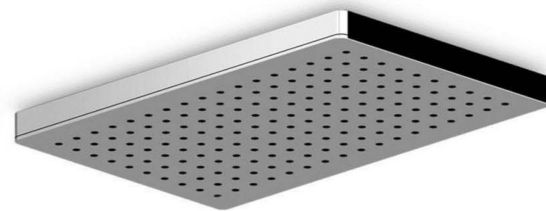
AGUABLU HANDLES



AGUABLU FAUCET



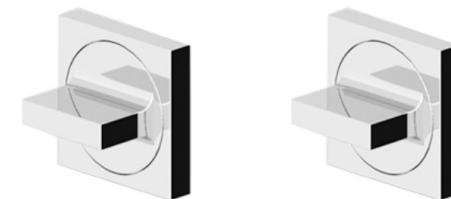
AGUABLU SHOWER HEAD



AGUABLU SHOWER HEAD



AGUABLU FAUCET



AGUABLU HANDLES

ZUCCHETTI - FAUCET OPTIONS

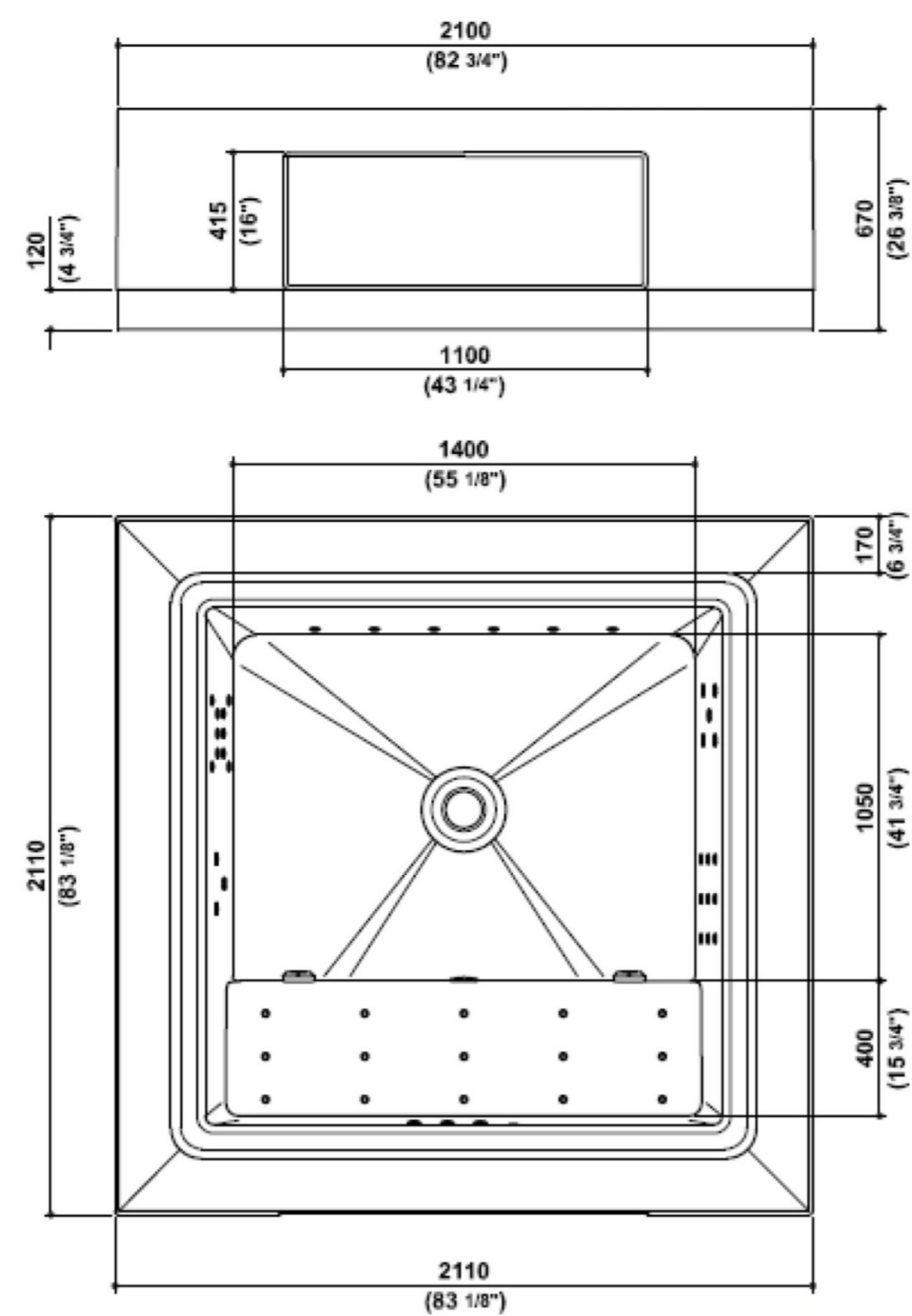


JINGLE FAUCET



SPIN FAUCET

KOS - POOL QUADRANT



MASTER BEDROOM



TERRE DE SIENE WOOD OAK FOR MASTER BEDROOM FLOOR



SALVATORI - CREMA D'ORCIA FOR BALCONY AREA



SALVATORI - HONED SILK GEORGETTE LIMESTONE FOR LIVING ROOM, BATHROOM, DINING AND KITCHEN FLOORING. DIM: 12" X 24" TILES



LUALDI - LCD62 WHITE LACQUERED DOOR



LUALDI - LCD62 WHITE LACQUERED DOOR



STUDIO OLIVARI - LINK HANDLE AND PRIVACY LOCK



ELECTROLUX - FRONT LOAD WASHER AND DRYER



4.3 CU FT. FRONT LOAD WASHER WITH IQ-TOUCH

PRODUCT NAME: EIFLS60JIW

PRODUCT SIZE: 38" X 27" X 31 1/2"

15" H PEDESTAL

PRODUCT FINISHES/COLOURS: WHITE

8.0 CU FT. ELECTRIC FRONT LOAD DRYER WITH IQ-TOUCH

PRODUCT NAME: EIMED60JIW

PRODUCT SIZE: 38" X 27" X 31 1/2"

15" H PEDESTAL

PRODUCT FINISHES/COLOURS: WHITE

FOSTER - OUTDOOR KITCHEN



FOSTER - OUTDOOR KITCHEN



SPEC BOOK DISCLAIMER

THE ITEMS DEPICTED AND DESCRIBED HEREIN ARE INTENDED TO ILLUSTRATE THE TYPE OF FIXTURE AND/OR ITEM OF FINISH THAT IS ANTICIPATED TO BE USED IN VARIOUS AREAS WITH THE UNITS. IF CIRCUMSTANCES ARISE WHICH, IN THE DEVELOPER'S OPINION, WARRANT CHANGES OF SUPPLIERS, MANUFACTURERS, BRAND NAMES OR ITEMS, OR IF THE DEVELOPER ELECTS TO OMIT CERTAIN ITEMS, THE SELLER MAY MAKE SUBSTITUTIONS FOR EQUIPMENT, MATERIAL, ITEMS, APPLIANCES, FINISHES AND/OR FIXTURES WITH ITEMS WHICH IN THE DEVELOPER'S OPINION ARE OF EQUAL OR BETTER QUALITY (REGARDLESS OF COST). ADDITIONALLY, THE DEVELOPER HAS THE RIGHT TO SUBSTITUTE OR CHANGE MATERIALS AND/OR STAIN COLORS UTILIZED IN WOOD DECOR (IF ANY). CERTAIN OF THE FOREGOING ITEMS ARE SUBJECT TO SIZE AND COLOR VARIATIONS, GRAIN AND QUALITY VARIATIONS, AND MAY VARY IN ACCORDANCE WITH PRICE, AVAILABILITY AND CHANGES BY MANUFACTURER FROM THOSE SHOWN IN THE MODELS OR IN ILLUSTRATIONS OR INCLUDED HEREIN. CERTAIN COLORS DESCRIBED AND/OR AS SHOWN HEREIN, INCLUDING, BUT NOT LIMITED TO STONE, MARBLE, GRANITE, CABINETRY, CARPENTING AND WOOD STAIN, WILL WEATHER AND FADE AND MAY NOT BE DUPLICATED PRECISELY. ALL EXPOSED WOOD, TILE AND STONE SURFACES ARE SUBJECT TO VARIATIONS IN COLOR, UNEVENNESS AND NON STRUCTURAL CHANGES AND CRACKS, AND THE DEVELOPER WILL NOT BE RESPONSIBLE FOR ANY REPAIR, REPLACEMENT OR DAMAGES DUE TO ANY SUCH CAUSES.