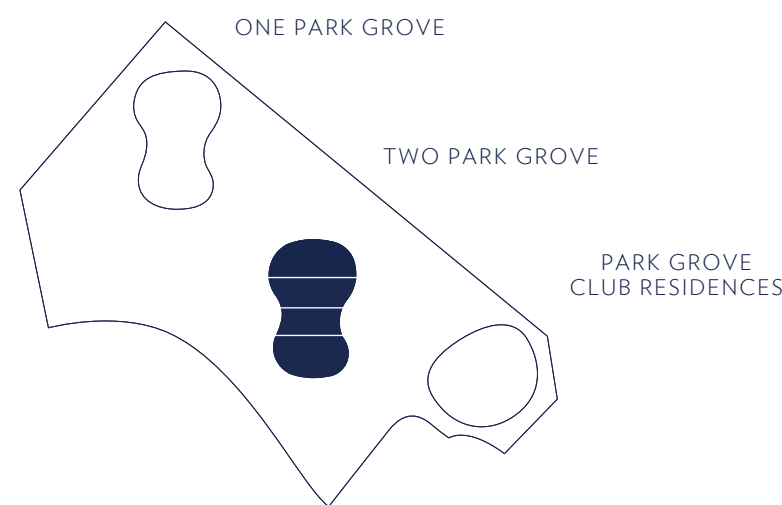
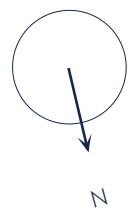


# KEY PLAN



BAY VIEW



FLOOR TO CEILING WINDOWS WITH BAY & GROVE VIEWS

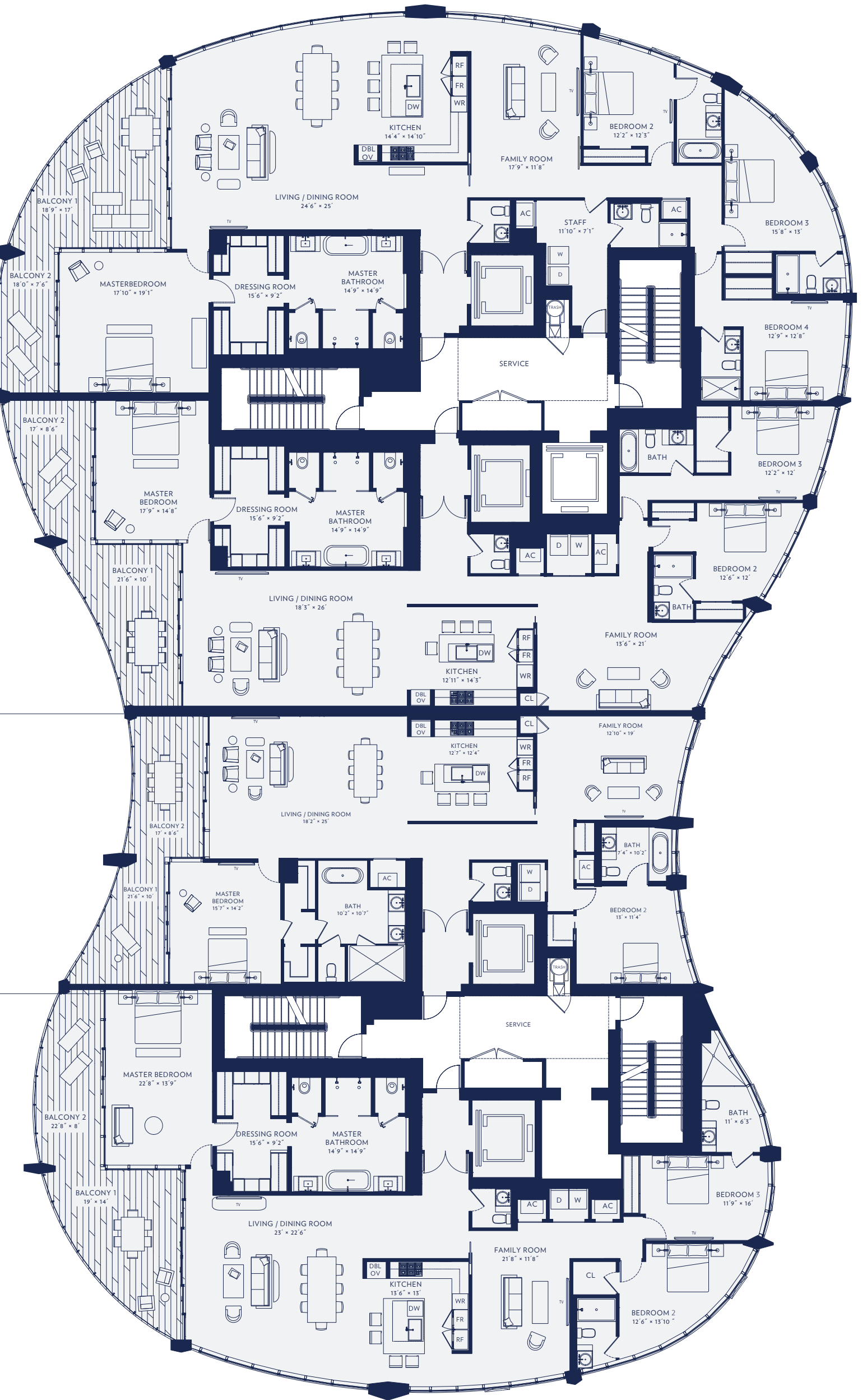
PRIVATE BAYFRONT TERRACES WITH BAY VIEWS

RESIDENCE A

RESIDENCE B

RESIDENCE C

RESIDENCE D



Stated dimensions are measured to the exterior boundaries of the exterior walls and the centerline of interior demising walls and in fact vary from the dimensions that would be determined by using the description and definition of the "Unit" set forth in the Declaration (which generally only includes the interior airspace between the perimeter walls and excludes interior structural components). Note that measurements of rooms set forth on this floor plan are generally taken at the greatest points of each given room (as if the room were a perfect rectangle), without regard for any cutouts. Accordingly, the area of the actual room will typically be smaller than the product obtained by multiplying the stated length times width. All dimensions are approximate and may vary with actual construction, and all floor plans and development plans are subject to change.

# RESIDENCE A



BAY VIEW

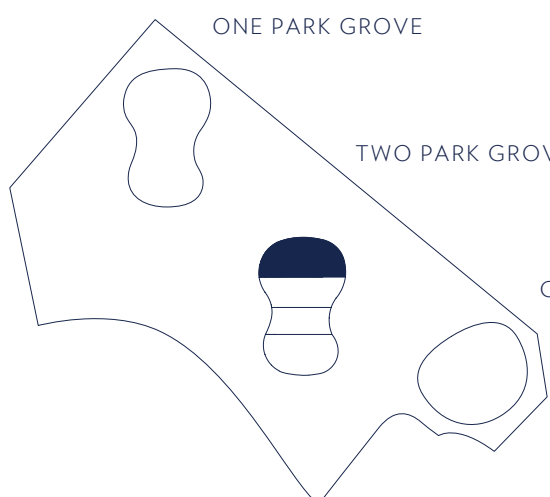
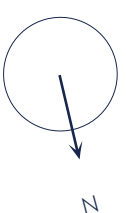
GROVE VIEW

BAY VIEW

ONE PARK GROVE

TWO PARK GROVE

PARK GROVE CLUB RESIDENCES



- 4 BEDROOMS
- 5 BATHROOMS
- 1 POWDER ROOM
- 1 STAFF ROOM

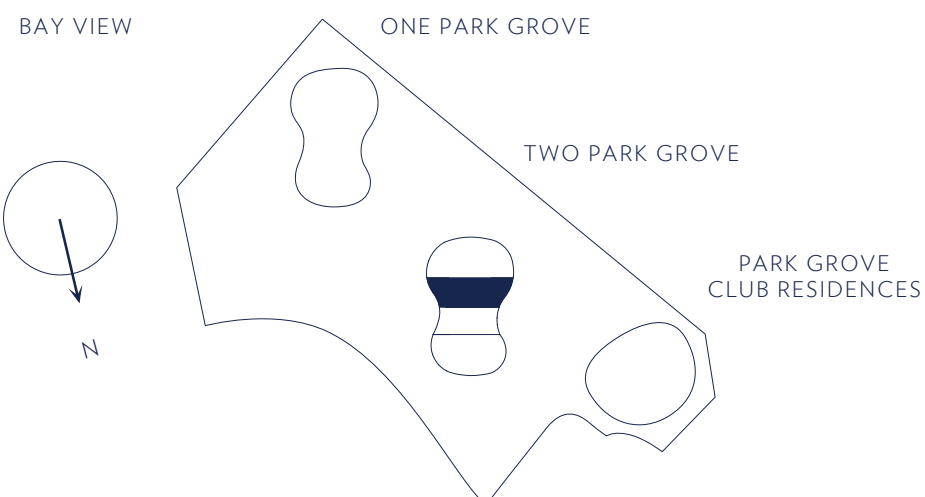
3,592 SQ FT · 334 SQ M INTERIOR  
 442 SQ FT · 41 SQ M EXTERIOR  
 4,034 SQ FT · 375 SQ M TOTAL

- 12 FOOT FLOOR TO CEILING GLASS OVERLOOKING BISCAYNE BAY
- PRIVATE OVER-SIZED WATERFRONT TERRACES
- EXPANSIVE DINING AND ENTERTAINING AREAS
- PRIVATE CORNER MASTER BEDROOM WITH WALK-IN CLOSET
- DOUBLE SIZE SHOWER
- FREESTANDING SOAKING TUB

- HIS & HERS WATER CLOSETS
- HIS & HERS VANITIES
- BEDROOMS WITH EN SUITE BATHROOMS
- EAT-IN CHEF'S KITCHEN WITH ISLAND, WOLF AND SUBZERO APPLIANCES
- STAFF ROOM WITH EN SUITE BATH
- KITCHENS & BATHS DESIGNED BY WILLIAM SOFIELD

Stated dimensions are measured to the exterior boundaries of the exterior walls and the centerline of interior demising walls and in fact vary from the dimensions that would be determined by using the description and definition of the "Unit" set forth in the Declaration (which generally only includes the interior airspace between the perimeter walls and excludes interior structural components). Note that measurements of rooms set forth on this floor plan are generally taken at the greatest points of each given room (as if the room were a perfect rectangle), without regard for any cutouts. Accordingly, the area of the actual room will typically be smaller than the product obtained by multiplying the stated length times width. All dimensions are approximate and may vary with actual construction, and all floor plans and development plans are subject to change.

# RESIDENCE B



3 BEDROOMS  
 3 BATHROOMS  
 1 POWDER ROOM  
 4th BEDROOM OPTION  
 2,884 SQ FT · 268 SQ M INTERIOR  
 393 SQ FT · 37 SQ M EXTERIOR  
 3,277 SQ FT · 304 SQ M TOTAL

12 FOOT FLOOR TO CEILING GLASS OVERLOOKING BISCAYNE BAY  
 PRIVATE OVER-SIZED WATERFRONT TERRACES  
 EXPANSIVE DINING AND ENTERTAINING AREAS  
 PRIVATE CORNER MASTER BEDROOM WITH WALK-IN CLOSET  
 DOUBLE SIZE SHOWER  
 FREESTANDING SOAKING TUB

HIS & HERS WATER CLOSETS  
 HIS & HERS VANITIES  
 BEDROOMS WITH EN SUITE BATHROOMS  
 EAT-IN CHEF'S KITCHEN WITH ISLAND, WOLF AND SUBZERO APPLIANCES  
 KITCHENS & BATHS DESIGNED BY WILLIAM SOFIELD

Stated dimensions are measured to the exterior boundaries of the exterior walls and the centerline of interior demising walls and in fact vary from the dimensions that would be determined by using the description and definition of the "Unit" set forth in the Declaration (which generally only includes the interior airspace between the perimeter walls and excludes interior structural components). Note that measurements of rooms set forth on this floor plan are generally taken at the greatest points of each given room (as if the room were a perfect rectangle), without regard for any cutouts. Accordingly, the area of the actual room will typically be smaller than the product obtained by multiplying the stated length times width. All dimensions are approximate and may vary with actual construction, and all floor plans and development plans are subject to change.



# RESIDENCE C



BAY VIEW

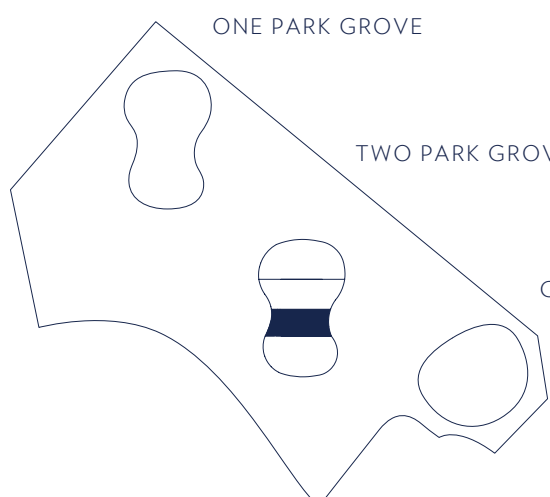
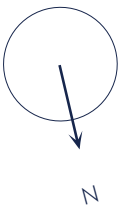
GROVE VIEW

BAY VIEW

ONE PARK GROVE

TWO PARK GROVE

PARK GROVE CLUB RESIDENCES



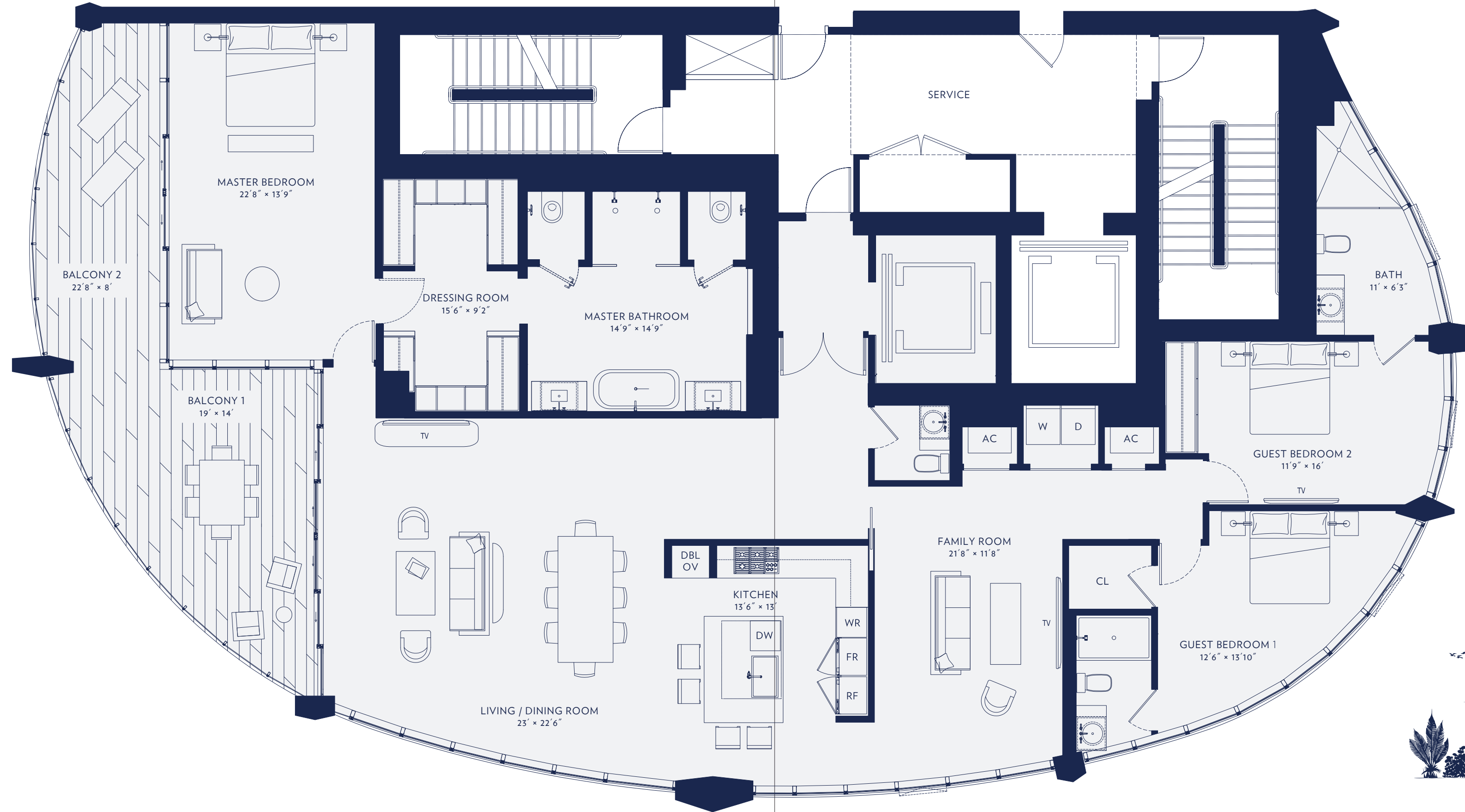
2 BEDROOMS  
 2 BATHROOMS  
 1 POWDER ROOM  
 3rd BEDROOM OPTION  
 2,232 SQ FT · 207 SQ M INTERIOR  
 314 SQ FT · 29 SQ M EXTERIOR  
 2,546 SQ FT · 236 SQ M TOTAL

12 FOOT FLOOR TO CEILING GLASS OVERLOOKING BISCAYNE BAY  
 PRIVATE OVER-SIZED WATERFRONT TERRACES  
 EXPANSIVE DINING AND ENTERTAINING AREAS  
 PRIVATE CORNER MASTER BEDROOM WITH WALK-IN CLOSET  
 DOUBLE SIZE SHOWER  
 FREESTANDING SOAKING TUB

HIS & HERS WATER CLOSETS  
 HIS & HERS VANITIES  
 BEDROOMS WITH EN SUITE BATHROOMS  
 EAT-IN CHEF'S KITCHEN WITH ISLAND, WOLF AND SUBZERO APPLIANCES  
 KITCHENS & BATHS DESIGNED BY WILLIAM SOFIELD

Stated dimensions are measured to the exterior boundaries of the exterior walls and the centerline of interior demising walls and in fact vary from the dimensions that would be determined by using the description and definition of the "Unit" set forth in the Declaration (which generally only includes the interior airspace between the perimeter walls and excludes interior structural components). Note that measurements of rooms set forth on this floor plan are generally taken at the greatest points of each given room (as if the room were a perfect rectangle), without regard for any cutouts. Accordingly, the area of the actual room will typically be smaller than the product obtained by multiplying the stated length times width. All dimensions are approximate and may vary with actual construction, and all floor plans and development plans are subject to change.

# RESIDENCE D



BAY VIEW

GROVE VIEW

BAY VIEW

ONE PARK GROVE

TWO PARK GROVE

PARK GROVE CLUB RESIDENCES

3 BEDROOMS  
3 BATHROOMS  
1 POWDER ROOM

2,917 SQ FT · 271 SQ M INTERIOR  
439 SQ FT · 41 SQ M EXTERIOR  
3,356 SQ FT · 312 SQ M TOTAL

12 FOOT FLOOR TO CEILING GLASS OVERLOOKING BISCAYNE BAY

PRIVATE OVER-SIZED WATERFRONT TERRACES  
EXPANSIVE DINING AND ENTERTAINING AREAS

PRIVATE CORNER MASTER BEDROOM WITH WALK-IN CLOSET

DOUBLE SIZE SHOWER

FREESTANDING SOAKING TUB

HIS & HERS WATER CLOSETS

HIS & HERS VANITIES

BEDROOMS WITH EN SUITE BATHROOMS

EAT-IN CHEF'S KITCHEN WITH ISLAND, WOLF AND SUBZERO APPLIANCES

KITCHENS & BATHS DESIGNED BY WILLIAM SOFIELD

Stated dimensions are measured to the exterior boundaries of the exterior walls and the centerline of interior demising walls and in fact vary from the dimensions that would be determined by using the description and definition of the "Unit" set forth in the Declaration (which generally only includes the interior airspace between the perimeter walls and excludes interior structural components). Note that measurements of rooms set forth on this floor plan are generally taken at the greatest points of each given room (as if the room were a perfect rectangle), without regard for any cutouts. Accordingly, the area of the actual room will typically be smaller than the product obtained by multiplying the stated length times width. All dimensions are approximate and may vary with actual construction, and all floor plans and development plans are subject to change.